

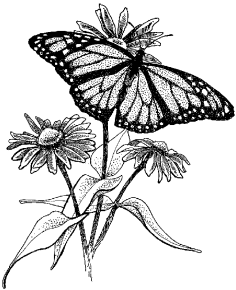
# Landscaping with Native Plants Workshop

**Are you interested in landscaping with native plants, but just don't know where to start? It doesn't have to be hard! Join us to learn simple ideas to make your landscaping project a success.**

The program will cover the basic environmental factors that should be considered for a successful landscaping project.

## **Topics to be covered include:**

- Traditional Plant Selection
- Understanding Soil Types and How They Effect Plant Choices
- How To Find A Native Plant Nursery
- Using Native Plants to Control Soil Erosion
- Native Flower and Grass Choices



**Learn how to enhance your property by using native plants and enjoy the benefits they can provide!**

When: Wednesday May 4, 2011 7:00 p.m. – 8:30 p.m.

Location: The Tamarack Sno-Flyers Clubhouse, CR 6 in Tamarack

Cost: FREE – However pre-registration is requested.  
Handouts and Refreshments provided.



Who Should Attend: Anyone interested in landscaping with native plants is invited. Lake association members and shoreline property owners are especially encouraged to attend.

**Confirm your attendance by calling  
The Aitkin County SWCD at (218) 927-6565.**

This program is offered through the cooperative efforts of the Big Sandy Area Lakes Watershed Management Project partners and Aitkin County Master Gardeners. Funding is provided through the MPCA/EPA Section 319 Grant Program.

